

Human KIN17 protein (Recombinant) (His-Tag) (STJP017905)

GENERAL INFORMATION

Product Type	Proteins
Applications	SDS-PAGE
Host / Source	E.coli

PRODUCT PROPERTIES

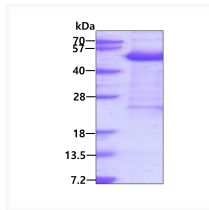
Concentration	0.5 mg/mL
Formulation	Liquid in phosphate-Buffered Saline (pH 7.4) containing 20% Glycerol
Molecular Weight	47.8 kDa
Storage Instruction	For short term storage, keep at +2C to +8C for up to 1 week. For long term storage, aliquot and store at-20C, and avoid repeat freeze-thaw cycles.

TARGET INFORMATION

Gene ID	22944
Gene Symbol	KIN
UniProt ID	KIN17_HUMAN
Immunogen Region	1-393aa
Immunogen Sequence	MGKSDFL TPKAIANRIK SKGLQKLRWY CQMCQKQCRD ENGFKCHCMS ESHQRQLLLA SENPQQFMDY FSEEFRNDFL ELLRRRFGTK RVHNNIVYNE YISHREHIHM NATQWETLTD FTKWLGREGL CKVDETPKGW YIQYIDRDPE TIRRQLELEK KKKQDLDEE KTAKFIEEQV RRGLEGKEQE VPTFTELSRE NDEEKV

ADDITIONAL INFORMATION

Note STRICTLY FOR FURTHER SCIENTIFIC RESEARCH USE ONLY (RUO). MUST NOT TO BE USED IN DIAGNOSTIC OR THERAPEUTIC APPLICATIONS.



SDS-PAGE gel showing recombinant human KIN17 protein stained with Coomassie blue