

Human ERLIN2 protein (Recombinant) (His-Tag) (STJP017890)

GENERAL INFORMATION

Product Type	Proteins
Applications	SDS-PAGE/Denatured
Host / Source	E.coli

PRODUCT PROPERTIES

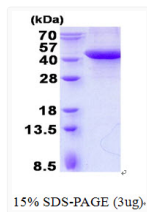
Concentration	1 mg/mL
Formulation	Liquid in 20mM Tris-HCl buffer (pH 8.0) containing 2M urea, 20% Glycerol
Molecular Weight	37.8 kDa
Storage Instruction	For short term storage, keep at +2C to +8C for up to 1 week. For long term storage, aliquot and store at -20C, and avoid repeat freeze-thaw cycles.

TARGET INFORMATION

Gene ID	11160
Gene Symbol	ERLIN2
UniProt ID	ERLN2_HUMAN
Immunogen Region	25-339aa
Immunogen Sequence	MGSSHHHHHH SSGLVPRGSH MGSKIEEGHI GVYYRGGALL TSTSGPGFHL MLPFITSYKS VQTTLQTDEV KNVPCGTSGG VMIFYDRIEV VNFLVNAVY DIVKNYTADY DKALIFNKH HELNQFCSVH TLQEVYIELF DQIDENLKL LQQDLTSMAP GLVIQAVRVT KPNIPEAIRR NYELMESEKT KLLIAAQKQK VVEKEAETER KKALIEAEKV AQVAEITY

ADDITIONAL INFORMATION

Note STRICTLY FOR FURTHER SCIENTIFIC RESEARCH USE ONLY (RUO). MUST NOT TO BE USED IN DIAGNOSTIC OR THERAPEUTIC APPLICATIONS.



15% SDS-PAGE (3µg)

SDS-PAGE gel of recombinant human ERLIN2 protein under reducing conditions stained with Coomassie blue