

Human ASPRV1 protein (Recombinant) (His-Tag) (STJP017876)

GENERAL INFORMATION

Product Type	Proteins
Applications	SDS-PAGE
Host / Source	E.coli

PRODUCT PROPERTIES

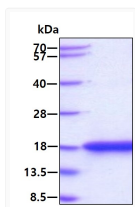
Concentration	0.25 mg/mL
Formulation	Liquid in 20mM Tris-HCl buffer (pH 8.0) containing 0.15M NaCl, 10% Glycerol, 1mM DTT
Molecular Weight	17.2 kDa
Storage Instruction	For short term storage, keep at +2C to +8C for up to 1 week. For long term storage, aliquot and store at -20C, and avoid repeat freeze-thaw cycles.

TARGET INFORMATION

Gene ID	151516
Gene Symbol	ASPRV1
UniProt ID	APRV1_HUMAN
Immunogen Region	191-326aa
Immunogen Sequence	SMGKGY Y LKGKIGKVPV RFLVD SGAQV SVVHPNLWEE VTDGDLDTLQ PFENVVKVAN GAEMKILGVW DTA VSLGK LK LKAQFLVANA SAE EAIIGTD VLQDHNAILD FEHRTCTLKG KKFRLLPVGG SLEDEFDLE

ADDITIONAL INFORMATION

Note STRICTLY FOR FURTHER SCIENTIFIC RESEARCH USE ONLY (RUO). MUST NOT TO BE USED IN DIAGNOSTIC OR THERAPEUTIC APPLICATIONS.



SDS-PAGE gel of recombinant human ASPRV1 protein 3µg under reducing conditions Coomassie blue stain