

## Human LYG2 protein (Recombinant) (His-Tag) (STJP017857)

### GENERAL INFORMATION

Product Type	Proteins
Applications	SDS-PAGE
Host / Source	E.coli

### PRODUCT PROPERTIES

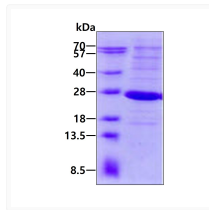
Concentration	0.5 mg/mL
Formulation	Liquid in 20mM Tris-HCl buffer (pH 8.0) containing 0.2M NaCl, 20% Glycerol, 1mM DTT
Molecular Weight	23.9 kDa
Storage Instruction	For short term storage, keep at +2C to +8C for up to 1 week. For long term storage, aliquot and store at -20C, and avoid repeat freeze-thaw cycles.

### TARGET INFORMATION

Gene ID	<a href="#">254773</a>
Gene Symbol	<a href="#">LYG2</a>
UniProt ID	<a href="#">LYG2_HUMAN</a>
Immunogen Region	20-212aa
Immunogen Sequence	SYPFSHS MKPHLHPRLY HGCGDIMTM KTSGATCDAN SVMNCGIRGS EMFAEMDLRA IKPYQTLIKE VGQRHCVDPA VIAAIIRES HGGSVLQDGW DHRGLKFGLM QLDKQTYHPV GAWDSKEHLS QATGILTERI KAIQKKFPTW SVAQHLKGGL SAFKSGIEAI ATPSDIDNDF VNDIARAKF YKRQSF

### ADDITIONAL INFORMATION

Note STRICTLY FOR FURTHER SCIENTIFIC RESEARCH USE ONLY (RUO). MUST NOT TO BE USED IN DIAGNOSTIC OR THERAPEUTIC APPLICATIONS.



SDS-PAGE gel of recombinant human LYG2 protein 3µg under reducing conditions Coomassie blue stain