

Human CHMP5 protein (Recombinant) (His-Tag) (STJP017848)

GENERAL INFORMATION

Product Type	Proteins
Applications	SDS-PAGE
Host / Source	E.coli

PRODUCT PROPERTIES

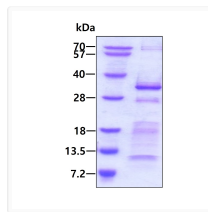
Concentration	0.25 mg/mL
Formulation	Liquid in 20mM Tris-HCl buffer (pH 8.0) containing 0.15M NaCl, 30% Glycerol
Molecular Weight	27 kDa
Storage Instruction	For short term storage, keep at +2C to +8C for up to 1 week. For long term storage, aliquot and store at -20C, and avoid repeat freeze-thaw cycles.

TARGET INFORMATION

Gene ID	51510
Gene Symbol	CHMP5
UniProt ID	CHMP5_HUMAN
Immunogen Region	1-219aa
Immunogen Sequence	MNRLFG KAKPKAPPPS LTDCIGTVDS RAESIDKKIS RLDAELVKYK DQIKKMREGP AKNMVKQKAL RVLKQKRMYE QQRDNLAQQS FNMEQANYTI QSLKDTKTTV DAMKLGVKEM KKAYKQVKID QIEDLQDQLE DMMEDANEIQ EALSRSYGTP ELDEDDLEAE LDALGDELLA DEDSSYLDEA ASAPAIPEGV PTDTKN

ADDITIONAL INFORMATION

Note STRICTLY FOR FURTHER SCIENTIFIC RESEARCH USE ONLY (RUO). MUST NOT TO BE USED IN DIAGNOSTIC OR THERAPEUTIC APPLICATIONS.



SDS-PAGE gel showing recombinant human CHMP5 protein 3µg under reducing conditions
Coomassie blue stain