

Human Ubch6/UBE2E1 protein (Recombinant) (His-Tag) (STJP017799)

GENERAL INFORMATION

| | |
|---------------|----------|
| Product Type | Proteins |
| Applications | SDS-PAGE |
| Host / Source | E.coli |

PRODUCT PROPERTIES

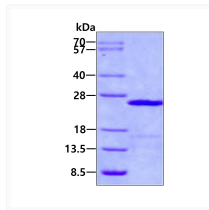
| | |
|---------------------|---|
| Concentration | 1 mg/mL |
| Formulation | Liquid in 20mM Tris-HCl buffer (pH 8.0) containing 0.15M NaCl, 20% Glycerol |
| Molecular Weight | 23.8 kDa |
| Storage Instruction | For short term storage, keep at +2C to +8C for up to 1 week. For long term storage, aliquot and store at -20C, and avoid repeat freeze-thaw cycles. |

TARGET INFORMATION

| | |
|--------------------|--|
| Gene ID | 7324 |
| Gene Symbol | UBE2E1 |
| UniProt ID | UB2E1_HUMAN |
| Immunogen Region | 1-193aa |
| Immunogen Sequence | MSDDDSR ASTSSSSSS SNQTEKETN TPKKESKVS MSKNSKLLST SAKRIQKELA DITLDPNPPNC SAGPKGDNIY EWRSTILGPP GSVYEGGVFF LDITFTPEYP FKPPKVTFRRT RIYHCNINSQ GVICLDILKD NWSPALTISK VLLSICSLLT DCNPADPLVG SIATQYMTNR AEHDRAMARQW TKRYAT |

ADDITIONAL INFORMATION

Note STRICTLY FOR FURTHER SCIENTIFIC RESEARCH USE ONLY (RUO). MUST NOT TO BE USED IN DIAGNOSTIC OR THERAPEUTIC APPLICATIONS.



SDS-PAGE gel of recombinant human Ubch6/UBE2E1 protein under reducing conditions