

Human CD161/KLRB1 protein (Recombinant) (His-Tag) (STJP017787)

GENERAL INFORMATION

Product Type	Proteins
Applications	SDS-PAGE/Denatured
Host / Source	E.coli

PRODUCT PROPERTIES

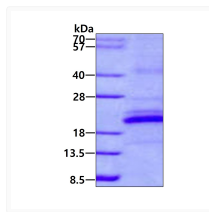
Concentration	1 mg/mL
Formulation	Liquid in 20mM Tris-HCl buffer (pH 8.0) containing 0.4M urea, 10% Glycerol
Molecular Weight	21.0 kDa
Storage Instruction	For short term storage, keep at +2C to +8C for up to 1 week. For long term storage, aliquot and store at -20C, and avoid repeat freeze-thaw cycles.

TARGET INFORMATION

Gene ID	3820
Gene Symbol	KLRB1
UniProt ID	KLRB1_HUMAN
Immunogen Region	67-225aa
Immunogen Sequence	QKSSIE KCSVDIQQSR NKTTERPGLL NCPYIWQQLR EKCLLFSHTV NPWNNLADC STKESLLLLI RDKDELIHTQ NLIRDKAILF WIGLNFLSE KNWKWINGSF LNSNDLEIRG DAKENSCISI SQTSVYSEYC STEIRWICQK ELTPVRNKVY PDS

ADDITIONAL INFORMATION

Note STRICTLY FOR FURTHER SCIENTIFIC RESEARCH USE ONLY (RUO). MUST NOT TO BE USED IN DIAGNOSTIC OR THERAPEUTIC APPLICATIONS.



SDS-PAGE gel showing recombinant human CD161 KLRB1 protein 3µg under reducing conditions Coomassie blue stain