

Human BIM/BCL2L11 protein (Recombinant) (His-Tag) (STJP017770)

GENERAL INFORMATION

Product Type	Proteins
Applications	SDS-PAGE/Denatured
Host / Source	E.coli

PRODUCT PROPERTIES

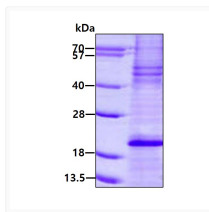
Concentration	0.5 mg/mL
Formulation	Liquid in 20mM Tris-HCl buffer (pH 8.0) containing 2M urea, 20% Glycerol 5mM DTT, 300mM NaCl
Molecular Weight	18.5 kDa
Storage Instruction	For short term storage, keep at +2C to +8C for up to 1 week. For long term storage, aliquot and store at -20C, and avoid repeat freeze-thaw cycles.

TARGET INFORMATION

Gene ID	10018
Gene Symbol	BCL2L11
UniProt ID	B2L11_HUMAN
Immunogen Region	1-138aa
Immunogen Sequence	MAKQPS DVSSECDREG RQLQPAERPP QLRPGAPTSL QTEPQDRSPA PMSCDKSTQT PSPPCQAFNH YLSAMASMRQ AEPADMRPEI WIAQELRRIG DEFNAYYARR VFLNNYQAAE DHPRMVILRL LRYIVRLVWR MH

ADDITIONAL INFORMATION

Note STRICTLY FOR FURTHER SCIENTIFIC RESEARCH USE ONLY (RUO). MUST NOT TO BE USED IN DIAGNOSTIC OR THERAPEUTIC APPLICATIONS.



SDS-PAGE gel of recombinant human BIM BCL2L11 protein under reducing conditions stained with Coomassie blue