

## Human OLA1 protein (Recombinant) (His-Tag) (STJP017769)

### GENERAL INFORMATION

Product Type	Proteins
Applications	SDS-PAGE
Host / Source	E.coli

### PRODUCT PROPERTIES

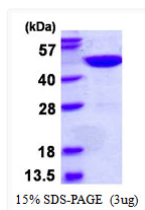
Concentration	1 mg/mL
Formulation	Liquid in 20mM Tris-HCl buffer (pH 8.0) containing 10% Glycerol, 0.1M NaCl
Molecular Weight	47.3 kDa
Storage Instruction	For short term storage, keep at +2C to +8C for up to 1 week. For long term storage, aliquot and store at -20C, and avoid repeat freeze-thaw cycles.

### TARGET INFORMATION

Gene ID	<a href="#">29789</a>
Gene Symbol	<a href="#">OLA1</a>
UniProt ID	<a href="#">OLA1_HUMAN</a>
Immunogen Region	1-396aa
Immunogen Sequence	MGSSHHHHHH SSGLVPRGSH MGSHPMPKKG GDGIKPPPII GRFGTSLKIG IVGLPNVGKS TFFNVLNLSQ ASAEENFPFCT IDPNESRVPV PDERFDLFCQ YHKPASKIPA FLNVVDIAGL VKGAHNGQGL GNAFLSHISA CDGIFHLTRA FEDDDITHVE GSVDPIRDIE IIHEELQLKD EEMIGPIIDK LEKVAVRGGD KKLKPEYDIM CKVKSWWIDQ KKPVRFYH

### ADDITIONAL INFORMATION

Note STRICTLY FOR FURTHER SCIENTIFIC RESEARCH USE ONLY (RUO). MUST NOT TO BE USED IN DIAGNOSTIC OR THERAPEUTIC APPLICATIONS.



SDS-PAGE gel of recombinant human OLA1 protein 3 $\mu$ g under reducing conditions stained with Coomassie blue