

## Human GTF2E2 protein (Recombinant) (His-Tag) (STJP017658)

### GENERAL INFORMATION

Product Type	Proteins
Applications	SDS-PAGE
Host / Source	E.coli

### PRODUCT PROPERTIES

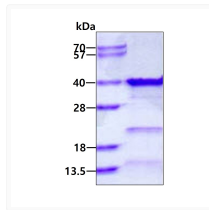
Concentration	1 mg/mL
Formulation	Liquid in 20mM Tris-HCl buffer (pH 8.0) containing 30% Glycerol, 0.1M NaCl, 1mM DTT
Molecular Weight	35.6 kDa
Storage Instruction	For short term storage, keep at +2C to +8C for up to 1 week. For long term storage, aliquot and store at -20C, and avoid repeat freeze-thaw cycles.

### TARGET INFORMATION

Gene ID	<a href="#">2961</a>
Gene Symbol	<a href="#">GTF2E2</a>
UniProt ID	<a href="#">T2EB_HUMAN</a>
Immunogen Region	1-291aa
Immunogen Sequence	MDPSLL RERELFKKRA LSTPVVEKRS ASSESSSSSS KKKKTKVEHG GSSGSKQNSD HSNGSFNLKA LSGSSGYKFG VLAKIVNYMK TRHQRGDTHP LTLDEILDET QHLDIGLKKQK QWLMTEALVN NPKIEVIDGK YAFKPKYNVR DKKALLRLLD QHDQRGLGGI LLEDIEEALP NSQKAVKALG DQILFVNRPD KKKILF

### ADDITIONAL INFORMATION

Note STRICTLY FOR FURTHER SCIENTIFIC RESEARCH USE ONLY (RUO). MUST NOT TO BE USED IN DIAGNOSTIC OR THERAPEUTIC APPLICATIONS.



SDS-PAGE gel of recombinant human GTF2E2 protein 3µg reducing conditions Coomassie stain