

## Human Bcl-2 related A1 protein (Recombinant) (His-Tag) (STJP017653)

### GENERAL INFORMATION

Product Type	Proteins
Applications	SDS-PAGE
Host / Source	E.coli

### PRODUCT PROPERTIES

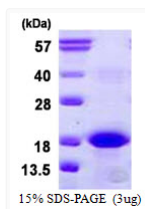
Concentration	0.5 mg/mL
Formulation	Liquid in 20mM Tris-HCl buffer (pH 8.0) containing 10% Glycerol
Molecular Weight	20.2 kDa
Storage Instruction	For short term storage, keep at +2C to +8C for up to 1 week. For long term storage, aliquot and store at -20C, and avoid repeat freeze-thaw cycles.

### TARGET INFORMATION

Gene ID	<a href="#">597</a>
Gene Symbol	<a href="#">BCL2A1</a>
UniProt ID	<a href="#">B2LA1_HUMAN</a>
Immunogen Region	1-152aa
Immunogen Sequence	MGSSHHHHH SSGLVPRGSH MGSHTDCEF GYIYRLAQDY LQYVLQIPQP GSGPSKTSRV LQKVAFSVQK EVEKNLKSCL DNVNVVSVDT ARTLFNQVME KEFEDDIINW GRIVTIFAFE GILIKLLRQ QIAPDVDYK EISYFVAEFI MNNTGEWIRQ NGGWENGFVK KFEPKS

### ADDITIONAL INFORMATION

Note STRICTLY FOR FURTHER SCIENTIFIC RESEARCH USE ONLY (RUO). MUST NOT TO BE USED IN DIAGNOSTIC OR THERAPEUTIC APPLICATIONS.



SDS-PAGE gel of recombinant human Bcl-2 related protein A1 under reducing conditions stained with Coomassie blue