

Human HAUS1 protein (Recombinant) (His-Tag) (STJP017608)

GENERAL INFORMATION

Product Type	Proteins
Applications	SDS-PAGE
Host / Source	E.coli

PRODUCT PROPERTIES

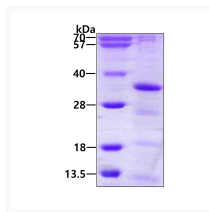
Concentration	0.25 mg/mL
Formulation	Liquid in 20mM Tris-HCl buffer (pH 8.0) containing 50% Glycerol, 0.2M NaCl, 2mM DTT
Molecular Weight	34.4 kDa
Storage Instruction	For short term storage, keep at +2C to +8C for up to 1 week. For long term storage, aliquot and store at-20C, and avoid repeat freeze-thaw cycles.

TARGET INFORMATION

Gene ID	115106
Gene Symbol	HAUS1
UniProt ID	HAUS1_HUMAN
Immunogen Region	1-278aa
Immunogen Sequence	MEPQEE RETQVAAWLK KIFGDHPIQ YEVPNRTTEI LHHLSERNRV RDRDVYLVIE DLKQKASEYE SEAKYLQDLL MESVNFSPAN LSSTGSRYLN ALVDSVALE TKDTSASF PAVNDLTS DL FRTKSKSEEI KIELEKLEKN LTATLVLEKC LQEDVKKAE L HLSTERAKVD NRRQNMDFLK AKSEEF RFGI KAAEEQ

ADDITIONAL INFORMATION

Note STRICTLY FOR FURTHER SCIENTIFIC RESEARCH USE ONLY (RUO). MUST NOT TO BE USED IN DIAGNOSTIC OR THERAPEUTIC APPLICATIONS.



SDS-PAGE gel of recombinant human HAUS1 protein 3 µg Coomassie blue stain