

Human DECR2 protein (Recombinant) (His-Tag) (STJP017453)

GENERAL INFORMATION

Product Type	Proteins
Applications	SDS-PAGE
Host / Source	E.coli

PRODUCT PROPERTIES

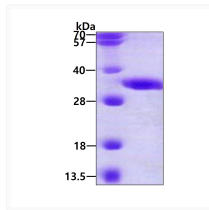
Concentration	0.25 mg/mL
Formulation	Liquid in 20mM Tris-HCl buffer (pH 8.0) containing 40% Glycerol, 0.15M NaCl, 1mM DTT
Molecular Weight	33.2 kDa
Storage Instruction	For short term storage, keep at +2C to +8C for up to 1 week. For long term storage, aliquot and store at -20C, and avoid repeat freeze-thaw cycles.

TARGET INFORMATION

Gene ID	26063
Gene Symbol	DECR2
UniProt ID	DECR2_HUMAN
Immunogen Region	1-292aa
Immunogen Sequence	MAQPPPD VEGDDCLPAY RHLFCPDLLR DKVAFITGGG SGIGFRIAEI FMRHGCHTVI ASRSLPRVLT AARKLAGATG RRCLPLSMDV RAPPVMAAV DQALKEFGRI DILINCAAGN FLCPAGALSF NAFKTVMDID TSGTFNVS RV LYEKFFRDHG GVIVNITATL GNRGQALQVH AGSAKAAVDA MTRHLAVEWG PQNIRV

ADDITIONAL INFORMATION

Note STRICTLY FOR FURTHER SCIENTIFIC RESEARCH USE ONLY (RUO). MUST NOT TO BE USED IN DIAGNOSTIC OR THERAPEUTIC APPLICATIONS.



SDS-PAGE gel of recombinant human DECR2 protein 3µg under reducing conditions Coomassie blue stain