

## Human IDI1 protein (Recombinant) (His-Tag) (STJP017401)

### GENERAL INFORMATION

Product Type	Proteins
Applications	SDS-PAGE
Host / Source	E.coli

### PRODUCT PROPERTIES

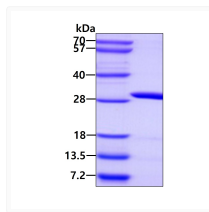
Concentration	1 mg/mL
Formulation	Liquid in 20mM Tris-HCl buffer (pH 8.0) containing 1mM DTT, 10% Glycerol, 0.1M NaCl
Molecular Weight	28.6 kDa
Storage Instruction	For short term storage, keep at +2C to +8C for up to 1 week. For long term storage, aliquot and store at -20C, and avoid repeat freeze-thaw cycles.

### TARGET INFORMATION

Gene ID	<a href="#">3422</a>
Gene Symbol	<a href="#">IDI1</a>
UniProt ID	<a href="#">IDI1_HUMAN</a>
Immunogen Region	1-228aa
Immunogen Sequence	MMPEINTNHL DKQQVQLLAE MCILIDENDN KIGAETKKNC HLNENIEKGL LHRAFSVFLF NTENKLLLQQ RSDAKITFPG CFTNTCCSHP LSNPAELEES DALGVRRAAQ RRLKAELGIP LEEVPPPEIN YLTRIHYKAQ SDGIWGEHEI DYILLVRKNV TLNPDPEIK SYCYVSKEEL KELLKKAASG EKITPWFKI IAATFL

### ADDITIONAL INFORMATION

Note STRICTLY FOR FURTHER SCIENTIFIC RESEARCH USE ONLY (RUO). MUST NOT TO BE USED IN DIAGNOSTIC OR THERAPEUTIC APPLICATIONS.



SDS-PAGE gel of recombinant human IDI1 protein under reducing conditions Coomassie stain