

Human DNA polymerase lambda/POLL protein (Recombinant) (His-Tag) (STJP017380)

GENERAL INFORMATION

Product Type	Proteins
Applications	SDS-PAGE
Host / Source	E.coli

PRODUCT PROPERTIES

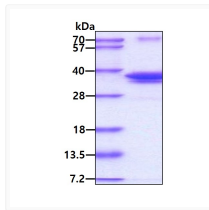
Concentration	0.5 mg/mL
Formulation	Liquid in 20mM Tris-HCl buffer (pH 8.0) containing 1mM DTT, 30% Glycerol, 0.1M NaCl
Molecular Weight	36 kDa
Storage Instruction	For short term storage, keep at +2C to +8C for up to 1 week. For long term storage, aliquot and store at -20C, and avoid repeat freeze-thaw cycles.

TARGET INFORMATION

Gene ID	27343
Gene Symbol	POLL
UniProt ID	DPOLL_HUMAN
Immunogen Region	1-300aa
Immunogen Sequence	MLMHHQKYLQ RFLGGKREKK QKEACSIPIG I GKRMAEKIIE ILESGHLRKL DHISESVPVL ELFSNIWGAG TKTAQMWYQQ GFRSLEDIRS QASLTTQQA I GLKHYSDFLE RMPREEATEI EQTVQKAAQA FNSGLLCVAC GSYRRGKATC GDVDVLITHP DGRSHRGIFS RLLDSLREQE FLTDDLVSQE ENGQQQKYLG VCRLPG

ADDITIONAL INFORMATION

Note STRICTLY FOR FURTHER SCIENTIFIC RESEARCH USE ONLY (RUO). MUST NOT TO BE USED IN DIAGNOSTIC OR THERAPEUTIC APPLICATIONS.



SDS-PAGE gel showing recombinant human DNA polymerase lambda POLL protein at 3µg under reducing conditions