

Human PECR protein (Recombinant) (His-Tag) (STJP017364)

GENERAL INFORMATION

Product Type	Proteins
Applications	SDS-PAGE
Host / Source	E.coli

PRODUCT PROPERTIES

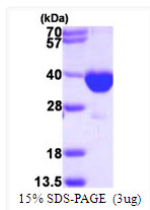
Concentration	1 mg/mL
Formulation	Liquid in 20mM Tris-HCl buffer (pH 8.0) containing 10% Glycerol, 2mM DTT, 0.15M NaCl.
Molecular Weight	35.1 kDa
Storage Instruction	For short term storage, keep at +2C to +8C for up to 1 week. For long term storage, aliquot and store at -20C, and avoid repeat freeze-thaw cycles.

TARGET INFORMATION

Gene ID	55825
Gene Symbol	PECR
UniProt ID	PECR_HUMAN
Immunogen Region	1-303aa
Immunogen Sequence	MGSSHHHHHH SSGLVPRGSH MGSHTMASWAK GRSYLAPGLL QGQVAIVTGG ATGIGKAIVK ELLELGSNVV IASRKLERLK SAADELQANL PPTKQARVIP IQCNIRNEEE VNNLVKSTLD TFGKINFLVN NGGGQFLSPA EHISSKGWHA VLETNLTGTF YMCKAVYSSW MKEHGGSIVN IIVPTKAGFP LAVHSGAARA GVYNLTKSLA LEWACSGIRI NCVAPGVI

ADDITIONAL INFORMATION

Note STRICTLY FOR FURTHER SCIENTIFIC RESEARCH USE ONLY (RUO). MUST NOT TO BE USED IN DIAGNOSTIC OR THERAPEUTIC APPLICATIONS.



SDS-PAGE gel of recombinant human PECR protein 3µg reducing conditions Coomassie blue stain