

## Human SUFU protein (Recombinant) (His-Tag) (STJP017348)

### GENERAL INFORMATION

Product Type	Proteins
Applications	SDS-PAGE
Host / Source	E.coli

### PRODUCT PROPERTIES

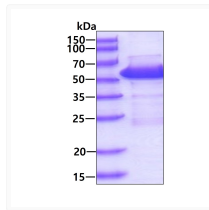
Concentration	0.5 mg/mL
Formulation	Liquid in phosphate-Buffered Saline (pH 7.4) containing 10% Glycerol
Molecular Weight	56.1 kDa
Storage Instruction	For short term storage, keep at +2C to +8C for up to 1 week. For long term storage, aliquot and store at -20C, and avoid repeat freeze-thaw cycles.

### TARGET INFORMATION

Gene ID	<a href="#">51684</a>
Gene Symbol	<a href="#">SUFU</a>
UniProt ID	<a href="#">SUFU_HUMAN</a>
Immunogen Region	1-484aa
Immunogen Sequence	MAELRPSGAP GPTAPPAPGP TAPPAFASLF PPGLHAIYGE CRRLYPDQPN PLQVTAIVKY WLGGPDPDLY VSMYRNVGSP SANIPEHWHY ISFGLSDLYG DNRVHEFTGT DGPSGFGFEL TFRLKRETGE SAPPTWPAEL MQGLARYVVFQ SENTFCSGDH VSWHSPDLS ESRIQHMLLT EDPQMOPVQT PFGVVTFLLQI VGVCTE

### ADDITIONAL INFORMATION

Note STRICTLY FOR FURTHER SCIENTIFIC RESEARCH USE ONLY (RUO). MUST NOT TO BE USED IN DIAGNOSTIC OR THERAPEUTIC APPLICATIONS.



SDS-PAGE gel of recombinant human SUFU protein 3µg under reducing conditions Coomassie blue stained