

## Human CENPH protein (Recombinant) (His-Tag) (STJP017334)

### GENERAL INFORMATION

Product Type	Proteins
Applications	SDS-PAGE/Denatured
Host / Source	E.coli

### PRODUCT PROPERTIES

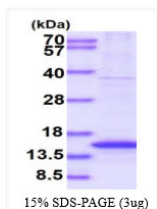
Concentration	0.5 mg/mL
Formulation	Liquid in 20mM Tris-HCl buffer (pH 8.0) containing 10% Glycerol
Molecular Weight	15.5 kDa
Storage Instruction	For short term storage, keep at +2C to +8C for up to 1 week. For long term storage, aliquot and store at -20C, and avoid repeat freeze-thaw cycles.

### TARGET INFORMATION

Gene ID	<a href="#">64946</a>
Gene Symbol	<a href="#">CENPH</a>
UniProt ID	<a href="#">CENPH_HUMAN</a>
Immunogen Region	136-247aa
Immunogen Sequence	MGSSHHHHHH SSSLVPRGSH MLNKLIMKSQ QESWDLEEKL LDIRKKRLQL KQASESKLLE IQTEKNKQKI DLDSMENSER IKIIRQNLQM EIKITTVIQH VFQNLILGSK VNWAEDPALK EIVLQLEKNV DMM

### ADDITIONAL INFORMATION

Note STRICTLY FOR FURTHER SCIENTIFIC RESEARCH USE ONLY (RUO). MUST NOT TO BE USED IN DIAGNOSTIC OR THERAPEUTIC APPLICATIONS.



SDS-PAGE gel of recombinant human CENPH protein under reducing conditions stained with Coomassie blue