

Human Cofilin 2/CFL2 protein (Recombinant) (His-Tag) (STJP017311)

GENERAL INFORMATION

Product Type	Proteins
Applications	SDS-PAGE
Host / Source	E.coli

PRODUCT PROPERTIES

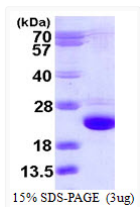
Concentration	1 mg/mL
Formulation	Liquid in 20mM Tris-HCl buffer (pH 8.0) containing 2mM DTT, 10% Glycerol, 50mM NaCl
Molecular Weight	20.9 kDa
Storage Instruction	For short term storage, keep at +2C to +8C for up to 1 week. For long term storage, aliquot and store at -20C, and avoid repeat freeze-thaw cycles.

TARGET INFORMATION

Gene ID	1073
Gene Symbol	CFL2
UniProt ID	COF2_HUMAN
Immunogen Region	1-166aa
Immunogen Sequence	MGSSHHHHHH SSGLVPRGSH MASGVTVNDE VIKVFNDMKV RKSSTQEEIK KRKKAVLFCL SDDKRQIIVE EAKQILVGD I GDTVEDPYTS FVKLLPLNDC RYALYDATYE TKESKKEDLV FIFWAPESAP LKSKMIYASS KDAIKKFTG IKHEWQVNGL DDIKDRSTLG EKLGGNVVVS LEGKPL

ADDITIONAL INFORMATION

Note STRICTLY FOR FURTHER SCIENTIFIC RESEARCH USE ONLY (RUO). MUST NOT TO BE USED IN DIAGNOSTIC OR THERAPEUTIC APPLICATIONS.



SDS-PAGE gel showing recombinant human Cofilin 2 CFL2 protein 3 µg under reducing conditions Coomassie blue stain