

Human CHMP2B protein (Recombinant) (His-Tag) (STJP017250)

GENERAL INFORMATION

Product Type	Proteins
Applications	SDS-PAGE
Host / Source	E.coli

PRODUCT PROPERTIES

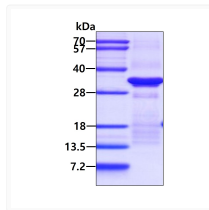
Concentration	0.5 mg/mL
Formulation	Liquid in 20mM Tris-HCl buffer (pH 8.0) containing 10% Glycerol, 1mM DTT, 0.1M NaCl.
Molecular Weight	26.1 kDa
Storage Instruction	For short term storage, keep at +2C to +8C for up to 1 week. For long term storage, aliquot and store at -20C, and avoid repeat freeze-thaw cycles.

TARGET INFORMATION

Gene ID	25978
Gene Symbol	CHMP2B
UniProt ID	CHM2B_HUMAN
Immunogen Region	1-213aa
Immunogen Sequence	MASLFKKKTV DDVIKEQNRE LRGTQRAIIR DRAALEKQEK QLELEIKKMA KIGNKEACKV LAKQLVHLRK QKTRTFVAVSS KVTSMSTQTK VMNSQMKMAG AMSTTAKTMQ AVNKKMDPQK TLQTMQNFQK ENMKMEMTEE MINDTLDDIF DGSDDEEESQ DIVNQLDEI GIEISGKMAK APSAARSLPS ASTSKATISD EEIERQ

ADDITIONAL INFORMATION

Note STRICTLY FOR FURTHER SCIENTIFIC RESEARCH USE ONLY (RUO). MUST NOT TO BE USED IN DIAGNOSTIC OR THERAPEUTIC APPLICATIONS.



SDS-PAGE gel of recombinant human CHMP2B protein under reducing conditions stained with Coomassie blue