

## Human Synaptotagmin-1 protein (Recombinant) (His-Tag) (STJP017226)

### GENERAL INFORMATION

Product Type	Proteins
Applications	SDS-PAGE
Host / Source	E.coli

### PRODUCT PROPERTIES

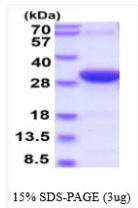
Concentration	0.25 mg/mL
Formulation	Liquid in 20mM Tris-HCl buffer (pH 8.0) containing 2mM DTT, 20% Glycerol, 100mM NaCl
Molecular Weight	29.5 kDa
Storage Instruction	For short term storage, keep at +2C to +8C for up to 1 week. For long term storage, aliquot and store at -20C, and avoid repeat freeze-thaw cycles.

### TARGET INFORMATION

Gene ID	<a href="#">6857</a>
Gene Symbol	<a href="#">SYT1</a>
UniProt ID	<a href="#">SYT1_HUMAN</a>
Immunogen Region	136-382aa
Immunogen Sequence	MEPKEEEEKLG KLQYSLDYDF QNNQLLVGII QAAELPALDM GGTSDPYVKV FLLPDKKKKF ETKVHRKTLN PVFNEQFTFK VPYSELGGKT LVMAVYDFDR FSKHDIIGEF KVPMNTVDFG HVTEEWRDLQ SAEKEEQEKL GDICFSLRYV PTAGKLTVVI LEAKNLKKMD VGGLSDPYVK IHLMQNGKRL KKKKTTIKKN TLNPPYNESF SFEVPFQIQ KVQVVVTV

### ADDITIONAL INFORMATION

Note STRICTLY FOR FURTHER SCIENTIFIC RESEARCH USE ONLY (RUO). MUST NOT TO BE USED IN DIAGNOSTIC OR THERAPEUTIC APPLICATIONS.



15% SDS-PAGE (3µg)

SDS-PAGE of recombinant human Synaptotagmin-1 protein under reducing conditions Coomassie blue stain