

Human RhoB protein (Recombinant) (His-Tag) (STJP017191)

GENERAL INFORMATION

Product Type	Proteins
Applications	SDS-PAGE
Host / Source	E.coli

PRODUCT PROPERTIES

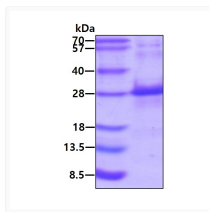
Concentration	0.25 mg/mL
Formulation	Liquid in 20mM Tris-HCl buffer (pH 8.0) containing 2mM DTT, 20% Glycerol, 0.2mM NaCl
Molecular Weight	23.9 kDa
Storage Instruction	For short term storage, keep at +2C to +8C for up to 1 week. For long term storage, aliquot and store at -20C, and avoid repeat freeze-thaw cycles.

TARGET INFORMATION

Gene ID	388
Gene Symbol	RHOB
UniProt ID	RHOB_HUMAN
Immunogen Region	1-193aa
Immunogen Sequence	MAAIRKKLVV VGDGACGKTC LLIVFSKDEF PEVYVPTVFE NYVADIEVDG KQVELALWDT AGQEDYDRLR PLSYPDTDVI LMCFSVDSPD SLENIPEKWV PEVKHFPCNV PIILVANKKD LRSDEHVRTE LARMKQEPVR TDDGRAMAVR IQAYDYLECS AKTKEGVREV FETATRAALQ KRYGSQNGCI NCC

ADDITIONAL INFORMATION

Note STRICTLY FOR FURTHER SCIENTIFIC RESEARCH USE ONLY (RUO). MUST NOT TO BE USED IN DIAGNOSTIC OR THERAPEUTIC APPLICATIONS.



SDS-PAGE gel of recombinant human RhoB protein 3µg under reducing conditions Coomassie blue stain