

Human CAPSL protein (Recombinant) (His-Tag) (STJP017116)

GENERAL INFORMATION

Product Type	Proteins
Applications	SDS-PAGE
Host / Source	E.coli

PRODUCT PROPERTIES

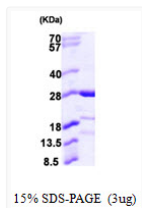
Concentration	1 mg/mL
Formulation	Liquid in 20mM Tris-HCl buffer (pH 8.0) containing 0.2M NaCl, 5mM DTT, 20% Glycerol
Molecular Weight	26.3 kDa
Storage Instruction	For short term storage, keep at +2C to +8C for up to 1 week. For long term storage, aliquot and store at -20C, and avoid repeat freeze-thaw cycles.

TARGET INFORMATION

Gene ID	133690
Gene Symbol	CAPSL
UniProt ID	CAPSL_HUMAN
Immunogen Region	1-208aa
Immunogen Sequence	MGSSHHHHH SSGLVPRGSH MAGTARHDRE MAIQAKKLT TATDPIERLR LQCLARGSAG IKGLGRVFRI MDDNNRRLD FKEFMKGLND YAVVMEKEEV EELFQRFDKD GNGTIDFNEF LLTLRPPMSR ARKEVIMQAF RKLDKTGDGV ITIEDLREVV NAKHHPKYQN GEWSEEQVFR KFLDNFDSY DKDGLVTPPE FMNYYAGVSA SIDTDVYFII MMRTAWKL

ADDITIONAL INFORMATION

Note STRICTLY FOR FURTHER SCIENTIFIC RESEARCH USE ONLY (RUO). MUST NOT TO BE USED IN DIAGNOSTIC OR THERAPEUTIC APPLICATIONS.



SDS-PAGE of recombinant human CAPSL protein under reducing conditions with Coomassie blue stain