

Human CCL14/HCC-1 protein (Recombinant) (His-Tag) (STJP017067)

GENERAL INFORMATION

Product Type	Proteins
Applications	SDS-PAGE
Host / Source	E.coli

PRODUCT PROPERTIES

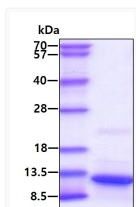
Concentration	0.5 mg/mL
Formulation	Liquid in phosphate-Buffered Saline (pH 7.4) containing 10% Glycerol
Molecular Weight	10.9 kDa
Storage Instruction	For short term storage, keep at +2C to +8C for up to 1 week. For long term storage, aliquot and store at -20C, and avoid repeat freeze-thaw cycles.

TARGET INFORMATION

Gene ID	6358
Gene Symbol	CCL14
UniProt ID	CCL14_HUMAN
Immunogen Region	20-93aa
Immunogen Sequence	MGSSHHHHHH SSGLVPRGSH MTKTESSSRG PYHPSECCFT YTTYKIPRQR IMDYYETNSQ CSKPGIVFIT KRGHSVCTNP SDKWVQDYIK DMKEN

ADDITIONAL INFORMATION

Note STRICTLY FOR FURTHER SCIENTIFIC RESEARCH USE ONLY (RUO). MUST NOT TO BE USED IN DIAGNOSTIC OR THERAPEUTIC APPLICATIONS.



SDS-PAGE gel of recombinant human CCL14 HCC-1 protein stained with Coomassie blue