

Human CCL20/MIP-3 alpha protein (Recombinant) (His-Tag) (STJP017054)

GENERAL INFORMATION

Product Type	Proteins
Applications	SDS-PAGE
Host / Source	E.coli

PRODUCT PROPERTIES

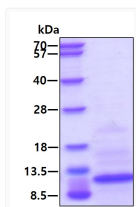
Concentration	0.25 mg/mL
Formulation	Liquid in phosphate-Buffered Saline (pH 7.4) containing 10% Glycerol
Molecular Weight	10.3 kDa
Storage Instruction	For short term storage, keep at +2C to +8C for up to 1 week. For long term storage, aliquot and store at -20C, and avoid repeat freeze-thaw cycles.

TARGET INFORMATION

Gene ID	6364
Gene Symbol	CCL20
UniProt ID	CCL20_HUMAN
Immunogen Region	27-96aa
Immunogen Sequence	MGSSHHHHHH SGLVPRGSH MASNFDCCLG YDTRILHPKF IVGFTRQLAN EGCINAIF HTKKKLSVCA NPKQTWVKYI VRLLSKVKVN M

ADDITIONAL INFORMATION

Note STRICTLY FOR FURTHER SCIENTIFIC RESEARCH USE ONLY (RUO). MUST NOT TO BE USED IN DIAGNOSTIC OR THERAPEUTIC APPLICATIONS.



SDS-PAGE of recombinant human CCL20 MIP-3 alpha protein under reducing conditions