

Human RAB1A protein (Recombinant) (His-Tag) (STJP017038)

GENERAL INFORMATION

Product Type	Proteins
Applications	SDS-PAGE
Host / Source	E.coli

PRODUCT PROPERTIES

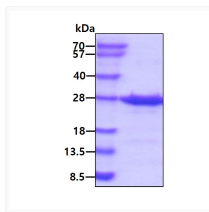
Concentration	0.5 mg/mL
Formulation	Liquid in 20mM Tris-HCl buffer (pH 8.0) containing 20% Glycerol, 0.1M NaCl, 1mM DTT
Molecular Weight	24.8 kDa
Storage Instruction	For short term storage, keep at +2C to +8C for up to 1 week. For long term storage, aliquot and store at -20C, and avoid repeat freeze-thaw cycles.

TARGET INFORMATION

Gene ID	5861
Gene Symbol	RAB1A
UniProt ID	RAB1A_HUMAN
Immunogen Region	1-205aa
Immunogen Sequence	MSSMNPEYDY LFKLLIGDS GVGKSCLLLR FADDTYTESY ISTIGVDFKI RTIELDGKTI KLQIWDTAGQ ERFRTITSSY YRGAHGIIIV YDVTDQESFN NVKQWLQEID RYASENVNKL LVGNKCDLTT KKVVDYTTAK EFADSLGIPF LETSAKNATN VEQSFMTMAA EIKKRMGPGA TAGGAEKSNV KIQSTPVKQS GGGCC

ADDITIONAL INFORMATION

Note STRICTLY FOR FURTHER SCIENTIFIC RESEARCH USE ONLY (RUO). MUST NOT TO BE USED IN DIAGNOSTIC OR THERAPEUTIC APPLICATIONS.



SDS-PAGE gel of recombinant human RAB1A protein 3µg under reducing conditions Coomassie blue stain