

Human GRAP2 protein (Recombinant) (His-Tag) (STJP017026)

GENERAL INFORMATION

Product Type	Proteins
Applications	SDS-PAGE
Host / Source	E.coli

PRODUCT PROPERTIES

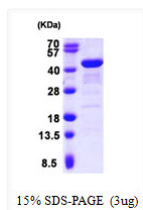
Concentration	0.5 mg/mL
Formulation	Liquid in 20mM Tris-HCl buffer (pH 8.0) containing 0.2M NaCl, 5mM DTT, 1mM EDTA, 30% Glycerol
Molecular Weight	40 kDa
Storage Instruction	For short term storage, keep at +2C to +8C for up to 1 week. For long term storage, aliquot and store at -20C, and avoid repeat freeze-thaw cycles.

TARGET INFORMATION

Gene ID	9402
Gene Symbol	GRAP2
UniProt ID	GRAP2_HUMAN
Immunogen Region	1-330aa
Immunogen Sequence	MGSSHHHHHH SSGLVPRGSH MEAVAKFDFT ASGEDELSFH TGDVLKILSN QEEWFKAELG SQEGYVPKNF IDIQPKWFH EGLSRHQAEN LLMGKEVGFF IIRASQSSPG DFSISVRHED DVQHFKVMRD NKGNYFLWTE KFPSLNKLVY YRTNSISRQ KQIFLRDRTR EDQGHGNSL DRRSQGGPHL SGAVGEEIRP SMNRKLSDHP PTLPLQQHQH QPQPQYA

ADDITIONAL INFORMATION

Note STRICTLY FOR FURTHER SCIENTIFIC RESEARCH USE ONLY (RUO). MUST NOT TO BE USED IN DIAGNOSTIC OR THERAPEUTIC APPLICATIONS.



15% SDS-PAGE (3µg)

SDS-PAGE gel of recombinant human GRAP2 protein under reducing conditions stained with Coomassie blue