

## Human BPHL protein (Recombinant) (His-Tag) (STJP017008)

### GENERAL INFORMATION

Product Type	Proteins
Applications	SDS-PAGE
Host / Source	E.coli

### PRODUCT PROPERTIES

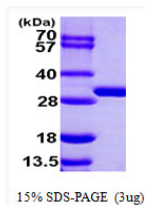
Concentration	0.5 mg/mL
Formulation	Liquid in 20mM Tris-HCl buffer (pH 8.0) containing 10% Glycerol, 1mM DTT, 50mM NaCl
Molecular Weight	31.1 kDa
Storage Instruction	For short term storage, keep at +2C to +8C for up to 1 week. For long term storage, aliquot and store at -20C, and avoid repeat freeze-thaw cycles.

### TARGET INFORMATION

Gene ID	<a href="#">670</a>
Gene Symbol	<a href="#">BPHL</a>
UniProt ID	<a href="#">BPHL_HUMAN</a>
Immunogen Region	38-291aa
Immunogen Sequence	MGSSHHHHH SSGLVPRGSH MSVTSAKVAV NGVQLHYQQT GEGDHAVLLL PGMLGSGETD FGPQLKLNK KLFTVVAWDP RGYGHSRPPD RDFPADFFER DAKDAVDLMK ALKFKKVSLG GWSDGGITAL IAAAKYPSYI HKMVIWGANAYVTDEDSMIY EGIRDVSKWS ERTRKPLEAL YGYDYFARTC EKWVDGIRQF KHLPDGNICR HLLPRVQCPA LIVHGEKD

### ADDITIONAL INFORMATION

Note STRICTLY FOR FURTHER SCIENTIFIC RESEARCH USE ONLY (RUO). MUST NOT TO BE USED IN DIAGNOSTIC OR THERAPEUTIC APPLICATIONS.



SDS-PAGE of recombinant human BPHL protein under reducing conditions with Coomassie blue stain