

Human RhoA protein (Recombinant) (His-Tag) (STJP016987)

GENERAL INFORMATION

Product Type	Proteins
Applications	SDS-PAGE
Host / Source	E.coli

PRODUCT PROPERTIES

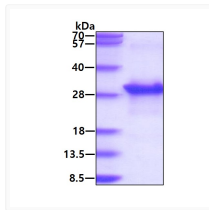
Concentration	1 mg/mL
Formulation	Liquid in 20mM Tris-HCl buffer (pH 8.0) containing 20% Glycerol, 0.1M NaCl, 1mM DTT
Molecular Weight	25.7 kDa
Storage Instruction	For short term storage, keep at +2C to +8C for up to 1 week. For long term storage, aliquot and store at -20C, and avoid repeat freeze-thaw cycles.

TARGET INFORMATION

Gene ID	387
Gene Symbol	RHOA
UniProt ID	RHOA_HUMAN
Immunogen Region	1-190aa
Immunogen Sequence	MAA IRKKLVIVGD GACGKTCLLI VFSKDFPEV YVPTVFENYV ADIEVDGKQV ELALWDTAGQ EDYDLRPLS YPDTDVILMC FSIDSPDSLE NIPEKWTPEV KHFCNPVPII LVGNKKDLRN DEHTRRELAK MKQEPVKPEE GRDMANRIGA FGYMECSAKT KDGVREVFEM ATRAALQARR GKPKSG

ADDITIONAL INFORMATION

Note STRICTLY FOR FURTHER SCIENTIFIC RESEARCH USE ONLY (RUO). MUST NOT TO BE USED IN DIAGNOSTIC OR THERAPEUTIC APPLICATIONS.



SDS-PAGE of recombinant human RhoA protein 3µg under reducing conditions with Coomassie blue stain