

Human ISCU protein (Recombinant) (His-Tag) (STJP016980)

GENERAL INFORMATION

Product Type	Proteins
Applications	SDS-PAGE
Host / Source	E.coli

PRODUCT PROPERTIES

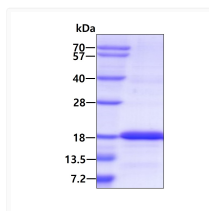
Concentration	0.5 mg/mL
Formulation	Liquid in 20mM Tris-HCl buffer (pH 8.0) containing 10% Glycerol, 2mM DTT, 100mM NaCl
Molecular Weight	16.7 kDa
Storage Instruction	For short term storage, keep at +2C to +8C for up to 1 week. For long term storage, aliquot and store at -20C, and avoid repeat freeze-thaw cycles.

TARGET INFORMATION

Gene ID	23479
Gene Symbol	ISCU
UniProt ID	ISCU_HUMAN
Immunogen Region	35-167aa
Immunogen Sequence	YHKKVVDHY ENPRNVGSLD KTSKNVGTGL VGAPACGDVM KLQIQVDEKG KIVDARFKTF GCGSAIASSS LATEWVKGKT VEEALTIKNT DIAKELCLPP VKLHCSMLAE DAIKAALADY KLKQEPKKGE AEKK

ADDITIONAL INFORMATION

Note STRICTLY FOR FURTHER SCIENTIFIC RESEARCH USE ONLY (RUO). MUST NOT TO BE USED IN DIAGNOSTIC OR THERAPEUTIC APPLICATIONS.



SDS-PAGE gel of recombinant human ISCU protein stained with Coomassie blue