

## Human IGF-2 protein (Recombinant) (No-Tag) (STJP016974)

### GENERAL INFORMATION

Product Type	Proteins
Applications	SDS-PAGE
Host / Source	E.coli

### PRODUCT PROPERTIES

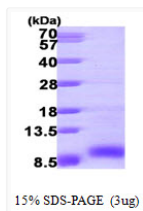
Concentration	0.25 mg/mL
Formulation	Liquid in phosphate-buffered saline (pH 7.4) containing 10% Glycerol
Molecular Weight	7.6 kDa
Storage Instruction	For short term storage, keep at +2C to +8C for up to 1 week. For long term storage, aliquot and store at -20C, and avoid repeat freeze-thaw cycles.

### TARGET INFORMATION

Gene ID	<a href="#">3481</a>
Gene Symbol	<a href="#">IGF2</a>
UniProt ID	<a href="#">IGF2_HUMAN</a>
Immunogen Region	25-91aa
Immunogen Sequence	MAYRPSSETLC GGELVDTLQF VCGDRGFYFS RPASRVSRRS RGIVEECCFR SCDLALLETY CATPAKSE

### ADDITIONAL INFORMATION

Note STRICTLY FOR FURTHER SCIENTIFIC RESEARCH USE ONLY (RUO). MUST NOT TO BE USED IN DIAGNOSTIC OR THERAPEUTIC APPLICATIONS.



SDS-PAGE gel of recombinant human IGF-2 protein 3µg under reducing conditions Coomassie blue stain