

Human RPA2 protein (Recombinant) (His-Tag) (STJP016932)

GENERAL INFORMATION

Product Type	Proteins
Applications	SDS-PAGE
Host / Source	E.coli

PRODUCT PROPERTIES

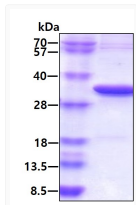
Concentration	0.5 mg/mL
Formulation	Liquid in 20mM Tris-HCl buffer (pH 8.0) containing 20% Glycerol, 0.1M NaCl, 2mM DTT
Molecular Weight	31.7 kDa
Storage Instruction	For short term storage, keep at +2C to +8C for up to 1 week. For long term storage, aliquot and store at -20C, and avoid repeat freeze-thaw cycles.

TARGET INFORMATION

Gene ID	6118
Gene Symbol	RPA2
UniProt ID	RFA2_HUMAN
Immunogen Region	1-270aa
Immunogen Sequence	MWNSGFE SYGSSSYGGA GGYTQSPGGF GSPAPSQAEEK KSRARAQHIV PCTISQLLSA TLVDEVFRIG NVEISQVTIV GIIRHAEKAP TNIVYKIDDM TAAPMDVRQW VDTDDTSSSEN TVVPPETYVK VAGHLRSFQN KKSLVAFKIM PLEDMNEFTT HILEVINAHM VLSKANSQPS AGRAPISNPG MSEAGNFGGN SFMPAN

ADDITIONAL INFORMATION

Note STRICTLY FOR FURTHER SCIENTIFIC RESEARCH USE ONLY (RUO). MUST NOT TO BE USED IN DIAGNOSTIC OR THERAPEUTIC APPLICATIONS.



SDS-PAGE gel of recombinant human RPA2 protein under reducing conditions stained with Coomassie blue