

## Human Glutathione synthetase/GSS protein (Recombinant) (His-Tag) (STJP016916)

### GENERAL INFORMATION

Product Type	Proteins
Applications	SDS-PAGE
Host / Source	E.coli

### PRODUCT PROPERTIES

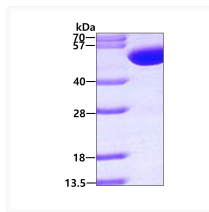
Concentration	1 mg/mL
Formulation	Liquid in 20mM Tris-HCl buffer (pH 8.0) containing 1mM DTT, 10% Glycerol
Molecular Weight	54.5 kDa
Storage Instruction	For short term storage, keep at +2C to +8C for up to 1 week. For long term storage, aliquot and store at -20C, and avoid repeat freeze-thaw cycles.

### TARGET INFORMATION

Gene ID	<a href="#">2937</a>
Gene Symbol	<a href="#">GSS</a>
UniProt ID	<a href="#">GSHB_HUMAN</a>
Immunogen Region	1-474aa
Immunogen Sequence	MATNWGSLQ DKQQLLELAR QAVDRALAEG VLLRTSQEPT SSEVVSYPF TLFPSLVPSA LLEQAYAVQM DFNLLYDAVS QNAAFLEQTL SSTIKQDDFT ARLFDIHKQV LKEGIAQTVF LGLNRSYMF QRSADGSPAL KQIEINTISA SFGGLASRTP AVHRHVLSVL SKTKEAGKIL SNNPSKGLAL GIAKAWELYG SPNALV

### ADDITIONAL INFORMATION

Note	STRICTLY FOR FURTHER SCIENTIFIC RESEARCH USE ONLY (RUO). MUST NOT TO BE USED IN DIAGNOSTIC OR THERAPEUTIC APPLICATIONS.
------	---



SDS-PAGE gel of recombinant human GSS protein under reducing conditions Coomassie blue stain