

## Human DDAH1 protein (Recombinant) (His-Tag) (STJP016894)

### GENERAL INFORMATION

Product Type	Proteins
Applications	SDS-PAGE
Host / Source	E.coli

### PRODUCT PROPERTIES

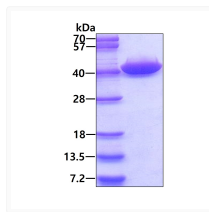
Concentration	1 mg/mL
Formulation	Liquid in phosphate-Buffered Saline (pH 7.4) containing 10% Glycerol
Molecular Weight	33.5 kDa
Storage Instruction	For short term storage, keep at +2C to +8C for up to 1 week. For long term storage, aliquot and store at-20C, and avoid repeat freeze-thaw cycles.

### TARGET INFORMATION

Gene ID	<a href="#">23576</a>
Gene Symbol	<a href="#">DDAH1</a>
UniProt ID	<a href="#">DDAH1_HUMAN</a>
Immunogen Region	1-285aa
Immunogen Sequence	MAGLGHP AAFGRATHAV VRALPESLGQ HALRSAKGEE VDVARAERQH QLYVGVLGSK LGLQVVLP DESLPDCVFV EDVAVVCEET ALITRPGAPS RRKEVDMMKKE ALEKLQLNIV EMKDENATLD GGDVLF TGRE FVGLSKRTN QRGAEILADT FKDYAVSTVP VADGLHLKSF CSMAGPNLIA IGSSESAQKA LKIMQQ

### ADDITIONAL INFORMATION

Note STRICTLY FOR FURTHER SCIENTIFIC RESEARCH USE ONLY (RUO). MUST NOT TO BE USED IN DIAGNOSTIC OR THERAPEUTIC APPLICATIONS.



SDS-PAGE gel of recombinant human DDAH1 protein under reducing conditions