

## Human CuL1 protein (Recombinant) (His-Tag) (STJP016893)

### GENERAL INFORMATION

Product Type	Proteins
Applications	SDS-PAGE
Host / Source	E.coli

### PRODUCT PROPERTIES

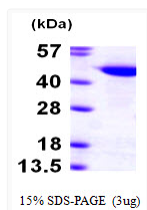
Concentration	1 mg/mL
Formulation	Liquid in 20mM Tris-HCl buffer (pH 8.0) containing 1mM DTT, 10% Glycerol, 100mM NaCl
Molecular Weight	49.4 kDa
Storage Instruction	For short term storage, keep at +2C to +8C for up to 1 week. For long term storage, aliquot and store at -20C, and avoid repeat freeze-thaw cycles.

### TARGET INFORMATION

Gene ID	<a href="#">8454</a>
Gene Symbol	<a href="#">CUL1</a>
UniProt ID	<a href="#">CUL1_HUMAN</a>
Immunogen Region	1-410aa
Immunogen Sequence	MSSTRSQNPH GLKQIGLDQI WDDLRAIQQ VYTRQSMAS RYMELYTHVY NYCTSVHQSN QARGAGVPPS KSKKGQTPGG AQFVGLLEYK RLKEFLKNYL TNLKDGEDL MDESVLKFYT QQWEDYRFSS KVLNGICAYL NRHWVRRECD EGRKGIYEIY SLALVTWRDC LFRPLNKQVT NAVLKIEKE RNGETINTRL ISGVVQ

### ADDITIONAL INFORMATION

Note STRICTLY FOR FURTHER SCIENTIFIC RESEARCH USE ONLY (RUO). MUST NOT TO BE USED IN DIAGNOSTIC OR THERAPEUTIC APPLICATIONS.



SDS-PAGE gel of recombinant human CuL1 protein 3µg under reducing conditions Coomassie blue stain