

## Human GGPS1 protein (Recombinant) (His-Tag) (STJP016842)

### GENERAL INFORMATION

Product Type	Proteins
Applications	SDS-PAGE
Host / Source	E.coli

### PRODUCT PROPERTIES

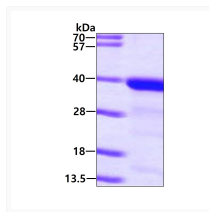
Concentration	1 mg/mL
Formulation	Liquid in 20mM Tris-HCl buffer (pH 8.0) containing 1mM DTT, 10% Glycerol
Molecular Weight	37 kDa
Storage Instruction	For short term storage, keep at +2C to +8C for up to 1 week. For long term storage, aliquot and store at -20C, and avoid repeat freeze-thaw cycles.

### TARGET INFORMATION

Gene ID	<a href="#">9453</a>
Gene Symbol	<a href="#">GGPS1</a>
UniProt ID	<a href="#">GGPPS_HUMAN</a>
Immunogen Region	1-300aa
Immunogen Sequence	MEKTQETVQR ILLEPYKYL LQPGKQVR TK LSQAFNHWLK VPEDKLQIII EVTEMLHNAS LLIDDIEDNS KLRRGFPVAH SIYGIPSVIN SANYVYFLGL EKVLTDHPD AVKLFTRQLL ELHQGGGLDI YWRDNYTCPT EEEYKAMVLQ KTGGLFGLAV GLMQLFSDYK EDLKPLLNTL GLFFQIRDDY ANLHSKEYSE NKSFCE

### ADDITIONAL INFORMATION

Note STRICTLY FOR FURTHER SCIENTIFIC RESEARCH USE ONLY (RUO). MUST NOT TO BE USED IN DIAGNOSTIC OR THERAPEUTIC APPLICATIONS.



SDS-PAGE gel of recombinant human GGPS1 protein 3µg Coomassie blue stain