

## Human Malate dehydrogenase 2/MDH2 protein (Recombinant) (His-Tag) (STJP016819)

### GENERAL INFORMATION

Product Type	Proteins
Applications	SDS-PAGE/Enzyme Activity
Host / Source	E.coli

### PRODUCT PROPERTIES

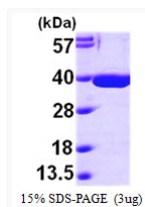
Concentration	1 mg/mL
Formulation	Liquid in 20mM Tris-HCl buffer (pH 7.5) containing 10% Glycerol
Molecular Weight	35.2 kDa
Storage Instruction	For short term storage, keep at +2C to +8C for up to 1 week. For long term storage, aliquot and store at -20C, and avoid repeat freeze-thaw cycles.

### TARGET INFORMATION

Gene ID	<a href="#">4191</a>
Gene Symbol	<a href="#">MDH2</a>
UniProt ID	<a href="#">MDHM_HUMAN</a>
Immunogen Region	25-338aa
Immunogen Sequence	AKVAVLGAS GGIGQPLSLL LKNSPLVSRL TLYDIAHTPG VAADLSHIET KAAVKGYLGP EQLPDCLKGC DVVVIPAGVP RKPGMTRDDL FNTNATIVAT LTAACAQHCP EAMICVIANP VNSTIPITAE VFKKHGVYNP NKIFGVTTLD IVRANTFVAE LKGLDPAVRN VPVIGGHAGK TIIP LISQCT PKVDFPQDQL TALTGR

### ADDITIONAL INFORMATION

Note STRICTLY FOR FURTHER SCIENTIFIC RESEARCH USE ONLY (RUO). MUST NOT TO BE USED IN DIAGNOSTIC OR THERAPEUTIC APPLICATIONS.



SDS-PAGE gel showing recombinant human MDH2 protein 3µg under reducing conditions with Coomassie blue staining