

Human ERP44 protein (Recombinant) (His-Tag) (STJP016818)

GENERAL INFORMATION

Product Type	Proteins
Applications	SDS-PAGE
Host / Source	E.coli

PRODUCT PROPERTIES

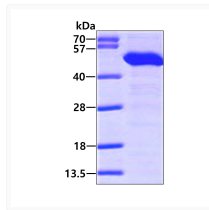
Concentration	1 mg/mL
Formulation	Liquid in 20mM Tris-HCl buffer (pH 7.5) containing 10% Glycerol
Molecular Weight	48.0 kDa
Storage Instruction	For short term storage, keep at +2C to +8C for up to 1 week. For long term storage, aliquot and store at -20C, and avoid repeat freeze-thaw cycles.

TARGET INFORMATION

Gene ID	23071
Gene Symbol	ERP44
UniProt ID	ERP44_HUMAN
Immunogen Region	30-406aa
Immunogen Sequence	EI TSLDTENIDE ILNNADVALV NFYADWCRFS QMLHPIFEEA SDVIKEEFPN ENQVVFARVD CDQHSDIAQR YRISKYPTLK LFRNGMMMKR EYRGQRSVKA LADYIRQQKS DPIQEIRDLA EITTLDRSKR NIIGYFEQKD SDNYRVFERV ANILHDDCAF LSAFGDVSKP ERYSGDNIIY KPPGHS

ADDITIONAL INFORMATION

Note STRICTLY FOR FURTHER SCIENTIFIC RESEARCH USE ONLY (RUO). MUST NOT TO BE USED IN DIAGNOSTIC OR THERAPEUTIC APPLICATIONS.



SDS-PAGE gel of recombinant human ERP44 protein 3 µg reducing conditions Coomassie blue stain