

## Human Malate dehydrogenase 1/MDH1 protein (Recombinant) (His-Tag) (STJP016805)

### GENERAL INFORMATION

Product Type	Proteins
Applications	SDS-PAGE/Enzyme Activity
Host / Source	E.coli

### PRODUCT PROPERTIES

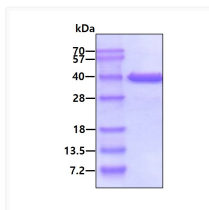
Concentration	1 mg/mL
Formulation	Liquid in 20mM Tris-HCl buffer (pH 8.0) containing 10% Glycerol
Molecular Weight	37.4 kDa
Storage Instruction	For short term storage, keep at +2C to +8C for up to 1 week. For long term storage, aliquot and store at -20C, and avoid repeat freeze-thaw cycles.

### TARGET INFORMATION

Gene ID	<a href="#">4190</a>
Gene Symbol	<a href="#">MDH1</a>
UniProt ID	<a href="#">MDHC_HUMAN</a>
Immunogen Region	1-334aa
Immunogen Sequence	MSEPIRVLVT GAAGQIAYSL LYSIGNGSVF GKDQPIILVL LDITPMMGVL DGVLMELQDC ALPLLKDVIAATDKEDVAFKD LDVAILVGSM PRREGMERKD LLKANVKIFK SQGAALDKYA KKSVKVIVVG NPANTNCLTA SKSAPSIPKE NFSCLTRLDH NRAKAQIALK LGVTANDVKN VIIWGNHSST QYPDVNHAKV KLGKKEGVVY EALKDSDWLK GEFVTTVQQ

### ADDITIONAL INFORMATION

Note STRICTLY FOR FURTHER SCIENTIFIC RESEARCH USE ONLY (RUO). MUST NOT TO BE USED IN DIAGNOSTIC OR THERAPEUTIC APPLICATIONS.



SDS-PAGE gel of recombinant human MDH1 protein 3µg under reducing conditions stained with Coomassie blue