

Human EDF1 protein (Recombinant) (His-Tag) (STJP016795)

GENERAL INFORMATION

Product Type	Proteins
Applications	SDS-PAGE
Host / Source	E.coli

PRODUCT PROPERTIES

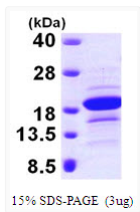
Concentration	0.5 mg/mL
Formulation	Liquid in 20mM Tris-HCl buffer (pH 8.0) containing 1mM DTT, 20% Glycerol, 0.1M NaCl
Molecular Weight	17.4 kDa
Storage Instruction	For short term storage, keep at +2C to +8C for up to 1 week. For long term storage, aliquot and store at -20C, and avoid repeat freeze-thaw cycles.

TARGET INFORMATION

Gene ID	8721
Gene Symbol	EDF1
UniProt ID	EDF1_HUMAN
Immunogen Region	1-148aa
Immunogen Sequence	MAESDWDTVT VLRKKGPTAA QAKSKQAILA AQRRGEDVET SKKWAAGQNK QHSITKNTAK LDRETEELHH DRVTLEVGKV IQQGRQSKGL TQKDLATKIN EKPQVIADYE SGRAIPNNQV LGKIERAIGL KLRGKDIGKP IEKGPRAKLE HHHHHH

ADDITIONAL INFORMATION

Note STRICTLY FOR FURTHER SCIENTIFIC RESEARCH USE ONLY (RUO). MUST NOT TO BE USED IN DIAGNOSTIC OR THERAPEUTIC APPLICATIONS.



SDS-PAGE gel of recombinant human EDF1 protein under reducing conditions stained with Coomassie blue