

## Human GIPC1 protein (Recombinant) (His-Tag) (STJP016753)

### GENERAL INFORMATION

Product Type	Proteins
Applications	SDS-PAGE
Host / Source	E.coli

### PRODUCT PROPERTIES

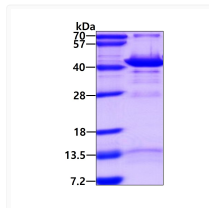
Concentration	0.5 mg/mL
Formulation	Liquid in 20mM Tris-HCl buffer (pH 8.0) containing 20% Glycerol 1mM DTT, 0.1M NaCl, and 1mM EDTA
Molecular Weight	38.2 kDa
Storage Instruction	For short term storage, keep at +2C to +8C for up to 1 week. For long term storage, aliquot and store at -20C, and avoid repeat freeze-thaw cycles.

### TARGET INFORMATION

Gene ID	<a href="#">10755</a>
Gene Symbol	<a href="#">GIPC1</a>
UniProt ID	<a href="#">GIPC1_HUMAN</a>
Immunogen Region	1-333aa
Immunogen Sequence	MPLGLGRRKK APPLVENEAA EPGRGGLGVG EPGPLGGGGS GGPQMGLPPP PPALRPRLVF HTQLAHGSPT GRIEGFTNVK ELYGKIAEAF RLPTAEVMFC TLNTHKVDMD KLLGGQIGLE DFIFAHVKGQ RKEVEVFKSE DALGLTITDN GAGYAFIKRI KEGSVIDHIH LISVGMIEA INGQSLGCR HYEVARLLKE LPRGRT

### ADDITIONAL INFORMATION

Note STRICTLY FOR FURTHER SCIENTIFIC RESEARCH USE ONLY (RUO). MUST NOT TO BE USED IN DIAGNOSTIC OR THERAPEUTIC APPLICATIONS.



SDS-PAGE gel of recombinant human GIPC1 protein stained with Coomassie blue