

Human K-Ras protein (Recombinant) (His-Tag) (STJP016749)

GENERAL INFORMATION

| | |
|---------------|----------|
| Product Type | Proteins |
| Applications | SDS-PAGE |
| Host / Source | E.coli |

PRODUCT PROPERTIES

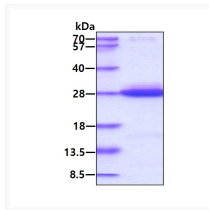
| | |
|---------------------|---|
| Concentration | 0.5 mg/mL |
| Formulation | Liquid in 20mM Tris-HCl buffer (pH 8.0) containing 0.1M NaCl, 1mM DTT, 10% Glycerol |
| Molecular Weight | 23.2 kDa |
| Storage Instruction | For short term storage, keep at +2C to +8C for up to 1 week. For long term storage, aliquot and store at -20C, and avoid repeat freeze-thaw cycles. |

TARGET INFORMATION

| | |
|--------------------|---|
| Gene ID | 3845 |
| Gene Symbol | KRAS |
| UniProt ID | RASK_HUMAN |
| Immunogen Region | 1-185aa |
| Immunogen Sequence | MTEYKLVVVG AGGVGKSALT IQLIQNHFVD EYDPTIEDSY RKQVVIDGET CLLDILDTAG HEEYSAMRDQ YMRTGEGFLC VFAINNTKSF EDIHRYREIQI KRVKDSSEVDP MVLVGNKCDL PSRTVDTKQA QDLARSYGIP FIETSAKTRQ GVDDAFYTLV REIRKHKEKM SKDGKKKKKK SKTKC |

ADDITIONAL INFORMATION

Note STRICTLY FOR FURTHER SCIENTIFIC RESEARCH USE ONLY (RUO). MUST NOT TO BE USED IN DIAGNOSTIC OR THERAPEUTIC APPLICATIONS.



SDS-PAGE of recombinant human K-Ras protein under reducing conditions stained with Coomassie blue