

## Human CCL19/MIP-3 beta protein (Recombinant) (T7-Tag) (STJP016720)

### GENERAL INFORMATION

Product Type	Proteins
Applications	SDS-PAGE
Host / Source	E.coli

### PRODUCT PROPERTIES

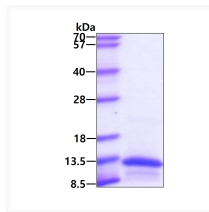
Concentration	0.5 mg/mL
Formulation	Liquid in phosphate-Buffered Saline (pH 7.4) containing 10% Glycerol
Molecular Weight	10.4 kDa
Storage Instruction	For short term storage, keep at +2C to +8C for up to 1 week. For long term storage, aliquot and store at-20C, and avoid repeat freeze-thaw cycles.

### TARGET INFORMATION

Gene ID	<a href="#">6363</a>
Gene Symbol	<a href="#">CCL19</a>
UniProt ID	<a href="#">CCL19_HUMAN</a>
Immunogen Region	22-98aa
Immunogen Sequence	GTND AEDCCLSVTQ KPIPGYIVRN FHYLLIKDGC RVPVVFTTL RGRQLCAPPD QPWVERIIQR LQRTSAKMKR RSS

### ADDITIONAL INFORMATION

Note STRICTLY FOR FURTHER SCIENTIFIC RESEARCH USE ONLY (RUO). MUST NOT TO BE USED IN DIAGNOSTIC OR THERAPEUTIC APPLICATIONS.



SDS-PAGE gel showing recombinant human CCL19 MIP-3 beta protein 3µg under reducing conditions Coomassie blue stain