

Human CERT1 protein (Recombinant) (His-Tag) (STJP016719)

GENERAL INFORMATION

| | |
|---------------|----------|
| Product Type | Proteins |
| Applications | SDS-PAGE |
| Host / Source | E.coli |

PRODUCT PROPERTIES

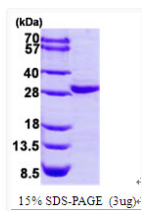
| | |
|---------------------|---|
| Concentration | 0.5 mg/mL |
| Formulation | Liquid in 20mM Tris-HCl buffer (pH 8.0) containing 10% Glycerol 0.1M NaCl |
| Molecular Weight | 32.9 kDa |
| Storage Instruction | For short term storage, keep at +2C to +8C for up to 1 week. For long term storage, aliquot and store at -20C, and avoid repeat freeze-thaw cycles. |

TARGET INFORMATION

| | |
|--------------------|---|
| Gene ID | 10087 |
| Gene Symbol | CERT1 |
| UniProt ID | CERT_HUMAN |
| Immunogen Region | 347-598aa |
| Immunogen Sequence | LH WPTSLPSGDA FSSVGTHRFV QKVEEMVQNH MTYSLQDVGG DANWQLVVEE GEMKVYRREV EENGIVLDPL KATHAVKGVV GHEVCNYFWN VDVRNDWETT IENFHVVETL ADNAIIYQT HKRVWPASQR DVLVLSVIRK IPALTENDPE TWIVCNFSVD HDSAPLNNRC VRKINVAMI CQTLVS |

ADDITIONAL INFORMATION

Note STRICTLY FOR FURTHER SCIENTIFIC RESEARCH USE ONLY (RUO). MUST NOT TO BE USED IN DIAGNOSTIC OR THERAPEUTIC APPLICATIONS.



SDS-PAGE gel of recombinant human CERT1 protein 3ug reducing conditions Coomassie blue stain