

Human FIS1 protein (Recombinant) (His-Tag) (STJP016702)

GENERAL INFORMATION

Product Type	Proteins
Applications	SDS-PAGE
Host / Source	E.coli

PRODUCT PROPERTIES

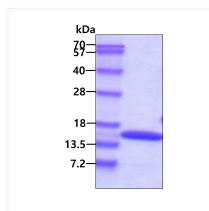
Concentration	1 mg/mL
Formulation	Liquid in 20mM Tris-HCl buffer (pH 8.0) containing 10% Glycerol
Molecular Weight	16.3 kDa
Storage Instruction	For short term storage, keep at +2C to +8C for up to 1 week. For long term storage, aliquot and store at -20C, and avoid repeat freeze-thaw cycles.

TARGET INFORMATION

Gene ID	51024
Gene Symbol	FIS1
UniProt ID	FIS1_HUMAN
Immunogen Region	1-122aa
Immunogen Sequence	MEAVLNELVS VEDLLKFEKK FQSEKAAGSV SKSTQFEYAW CLVRSKYND D IRKGIVLLEE LLPKGSKEEQ RDYVFYLA VG NYRLKEYEKA LKYVRG LLQT EPQNNQAKEL ERLIDKAMKK DG

ADDITIONAL INFORMATION

Note STRICTLY FOR FURTHER SCIENTIFIC RESEARCH USE ONLY (RUO). MUST NOT TO BE USED IN DIAGNOSTIC OR THERAPEUTIC APPLICATIONS.



SDS-PAGE gel of recombinant human FIS1 protein under reducing conditions Coomassie blue stain