

Human Crystallin mu/CRYM protein (Recombinant) (His-Tag) (STJP016699)

GENERAL INFORMATION

Product Type	Proteins
Applications	SDS-PAGE
Host / Source	E.coli

PRODUCT PROPERTIES

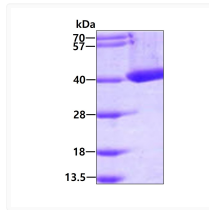
Concentration	1 mg/mL
Formulation	Liquid in 20mM Tris-HCl buffer (pH 8.0) containing 1mM DTT, 10% Glycerol
Molecular Weight	35.9 kDa
Storage Instruction	For short term storage, keep at +2C to +8C for up to 1 week. For long term storage, aliquot and store at -20C, and avoid repeat freeze-thaw cycles.

TARGET INFORMATION

Gene ID	1428
Gene Symbol	CRYM
UniProt ID	CRYM_HUMAN
Immunogen Region	1-314aa
Immunogen Sequence	MGSSHHHHHH SGLVPRGSH> MSRVPAFLSA AEVEEHLRSS SLLIPPLETA LANFSSGPEG

ADDITIONAL INFORMATION

Note STRICTLY FOR FURTHER SCIENTIFIC RESEARCH USE ONLY (RUO). MUST NOT TO BE USED IN DIAGNOSTIC OR THERAPEUTIC APPLICATIONS.



SDS-PAGE gel of recombinant human Crystallin mu CRYM protein under reducing conditions
Coomassie blue stain