

## Human PDE6D protein (Recombinant) (His-Tag) (STJP016693)

### GENERAL INFORMATION

Product Type	Proteins
Applications	SDS-PAGE
Host / Source	E.coli

### PRODUCT PROPERTIES

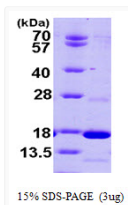
Concentration	0.5 mg/mL
Formulation	Liquid in 20mM Tris-HCl buffer (pH 8.0) containing 10% Glycerol, 1mM DTT, 100mM NaCl
Molecular Weight	18.4 kDa
Storage Instruction	For short term storage, keep at +2C to +8C for up to 1 week. For long term storage, aliquot and store at -20C, and avoid repeat freeze-thaw cycles.

### TARGET INFORMATION

Gene ID	<a href="#">5147</a>
Gene Symbol	<a href="#">PDE6D</a>
UniProt ID	<a href="#">PDE6D_HUMAN</a>
Immunogen Region	1-150aa
Immunogen Sequence	MSAKDERARE ILRGFKLNWM NLRDAETGKI LWQGTEDLSV PGVEHEARVP KKILKCKAVS RELNFSSTEQ MEKFRLEQKV YFKGQCLEEW FFEFGFVIPN STNTWQSLIE AAPESQMMPA SVLTGNVIE TKFFDDDLLV STSRVRLFYV

### ADDITIONAL INFORMATION

Note STRICTLY FOR FURTHER SCIENTIFIC RESEARCH USE ONLY (RUO). MUST NOT TO BE USED IN DIAGNOSTIC OR THERAPEUTIC APPLICATIONS.



SDS-PAGE gel showing recombinant human PDE6D protein 3 µg under reducing conditions Coomassie blue stain