

## Human Crystallin zeta like 1/CRYZL1 protein (Recombinant) (His-Tag) (STJP016690)

### GENERAL INFORMATION

Product Type	Proteins
Applications	SDS-PAGE
Host / Source	E.coli

### PRODUCT PROPERTIES

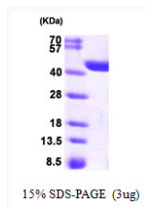
Concentration	0.5 mg/mL
Formulation	Liquid in 20mM Tris-HCl buffer (pH 8.0) containing 2mM DTT, 0.1M NaCl, 20% Glycerol
Molecular Weight	40.8 kDa
Storage Instruction	For short term storage, keep at +2C to +8C for up to 1 week. For long term storage, aliquot and store at -20C, and avoid repeat freeze-thaw cycles.

### TARGET INFORMATION

Gene ID	<a href="#">9946</a>
Gene Symbol	<a href="#">CRYZL1</a>
UniProt ID	<a href="#">QORL1_HUMAN</a>
Immunogen Region	1-349aa
Immunogen Sequence	MKGLYFQQSS TDEEITVFVQ EKEDLPVTEQ NFKVLQVKAC ALSQINTKLL AEMKMKKDLF PVGREIAGIV LDVGSKVSFF QPDDEVVIGL PLDSEDPGLC EVVRVHEHYL VHKPEKVTWT EAAGSIRDGV RAYTALHYLS HLSPGKSVLI MDGASAFGTI AIQLAHRGA KVISTACSLK DKQCLERFRP PIARVIDVSN GKVHVA

### ADDITIONAL INFORMATION

Note STRICTLY FOR FURTHER SCIENTIFIC RESEARCH USE ONLY (RUO). MUST NOT TO BE USED IN DIAGNOSTIC OR THERAPEUTIC APPLICATIONS.



SDS-PAGE gel of recombinant human CRYZL1 protein under reducing conditions with Coomassie stain