

## Human Calreticulin protein (Recombinant) (His-Tag) (STJP016682)

### GENERAL INFORMATION

Product Type	Proteins
Applications	SDS-PAGE
Host / Source	E.coli

### PRODUCT PROPERTIES

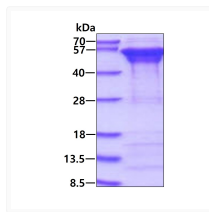
Concentration	1 mg/mL
Formulation	Liquid in 20mM Tris-HCl buffer (pH 8.0) containing 1mM DTT, 0.1M NaCl, 10% Glycerol
Molecular Weight	48.7 kDa
Storage Instruction	For short term storage, keep at +2C to +8C for up to 1 week. For long term storage, aliquot and store at -20C, and avoid repeat freeze-thaw cycles.

### TARGET INFORMATION

Gene ID	<a href="#">811</a>
Gene Symbol	<a href="#">CALR</a>
UniProt ID	<a href="#">CALR_HUMAN</a>
Immunogen Region	18-417aa
Immunogen Sequence	EPAVYFKEQ FLDGDGWTSR WIESKHKSD F GKFLVSSGKF YGDEEKDKGL QTSQDARFYA LSASFEPFSN KGQTLVVQFT VKHEQNIDCG GGYVKLFPNS LDQDTMHGDS EYNIMFGPDI CGPGTKKVHV IFNYKGNL INKDIRCKDD EFTHLYTLIV RPDNTYEVKI DNSQVESGSL EDDWDFLPPK KIKDPDASKP EDWDER

### ADDITIONAL INFORMATION

Note STRICTLY FOR FURTHER SCIENTIFIC RESEARCH USE ONLY (RUO). MUST NOT TO BE USED IN DIAGNOSTIC OR THERAPEUTIC APPLICATIONS.



SDS-PAGE of recombinant human Calreticulin protein 3µg under reducing conditions with Coomassie blue stain