

Human HAT1 protein (Recombinant) (His-Tag) (STJP016648)

GENERAL INFORMATION

Product Type	Proteins
Applications	SDS-PAGE
Host / Source	E.coli

PRODUCT PROPERTIES

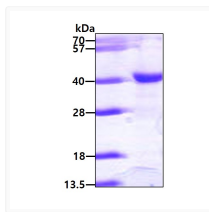
Concentration	0.5 mg/mL
Formulation	Liquid in 20mM Tris-HCl buffer (pH 8.0) containing 10% Glycerol, 1mM DTT
Molecular Weight	40 kDa
Storage Instruction	For short term storage, keep at +2C to +8C for up to 1 week. For long term storage, aliquot and store at -20C, and avoid repeat freeze-thaw cycles.

TARGET INFORMATION

Gene ID	8520
Gene Symbol	HAT1
UniProt ID	HAT1_HUMAN
Immunogen Region	20-341aa
Immunogen Sequence	KKLAEYKCN TNTAIELKLV RFPEDLENDI RTFFPEYTHQ LFGDDEAFG YKGLKILLYY IAGSLSTMFR VEYASKVDEN FDCVEADDVE GKIRQIIPPG FCTNTNDFLS LLEKEVDFKP FGTLHLHTYSV LSPTGGENFT FQIYKADMTG RGFREYHERL QTFLMWFIEI ASFIDVDDER WHYFLVFEKY NKDGATLFAT VGYMTV

ADDITIONAL INFORMATION

Note STRICTLY FOR FURTHER SCIENTIFIC RESEARCH USE ONLY (RUO). MUST NOT TO BE USED IN DIAGNOSTIC OR THERAPEUTIC APPLICATIONS.



SDS-PAGE gel of recombinant human HAT1 protein 3 μ g under reducing conditions
Coomassie blue stain